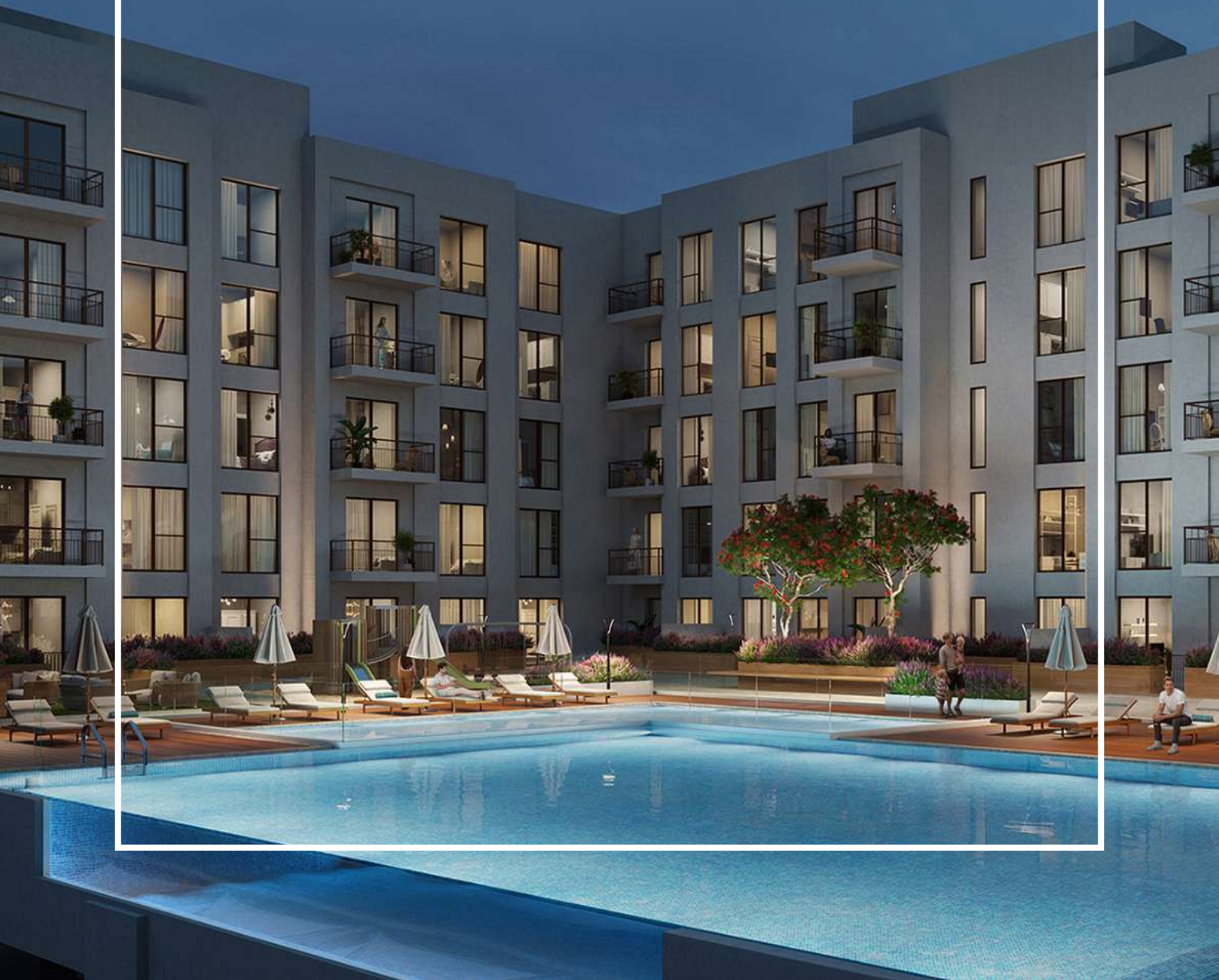


ASCOT

RESIDENCES

TOWN SQUARE DUBAI





**STYLE &
ELEGANCE**

TOWN SQUARE DUBAI

- 03 The Master Plan**
- 04 About Town Square Dubai**

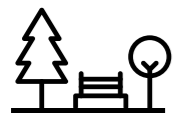
CONTENTS

ASCOT RESIDENCES

- 05 About ASCOT Residences**
- 06 Interior & Exterior**
- 08 Lifestyle & Facilities**
- 09 Floor Plans**



Community Facilities



Town Square Park



Swimming Pool



GYM



Basket Ball Courts



Football Pitch



Squash & Tennis Court



Kids Play Area



Splash Pad



Carousel



Kids Train



Cycling Track



Jogging Track



Retail Outlets



Restaurants & Cafes



Skate Park



Padel Tennis Court



Dog Park



Veterinary Clinic



Pet Shop



Laundry Shop



Barbecue Area



Clinic



Pharmacies



Fitness Club



Tailoring Shop



Grooming & Beauty Services



Nurseries



Mosque



Supermarkets

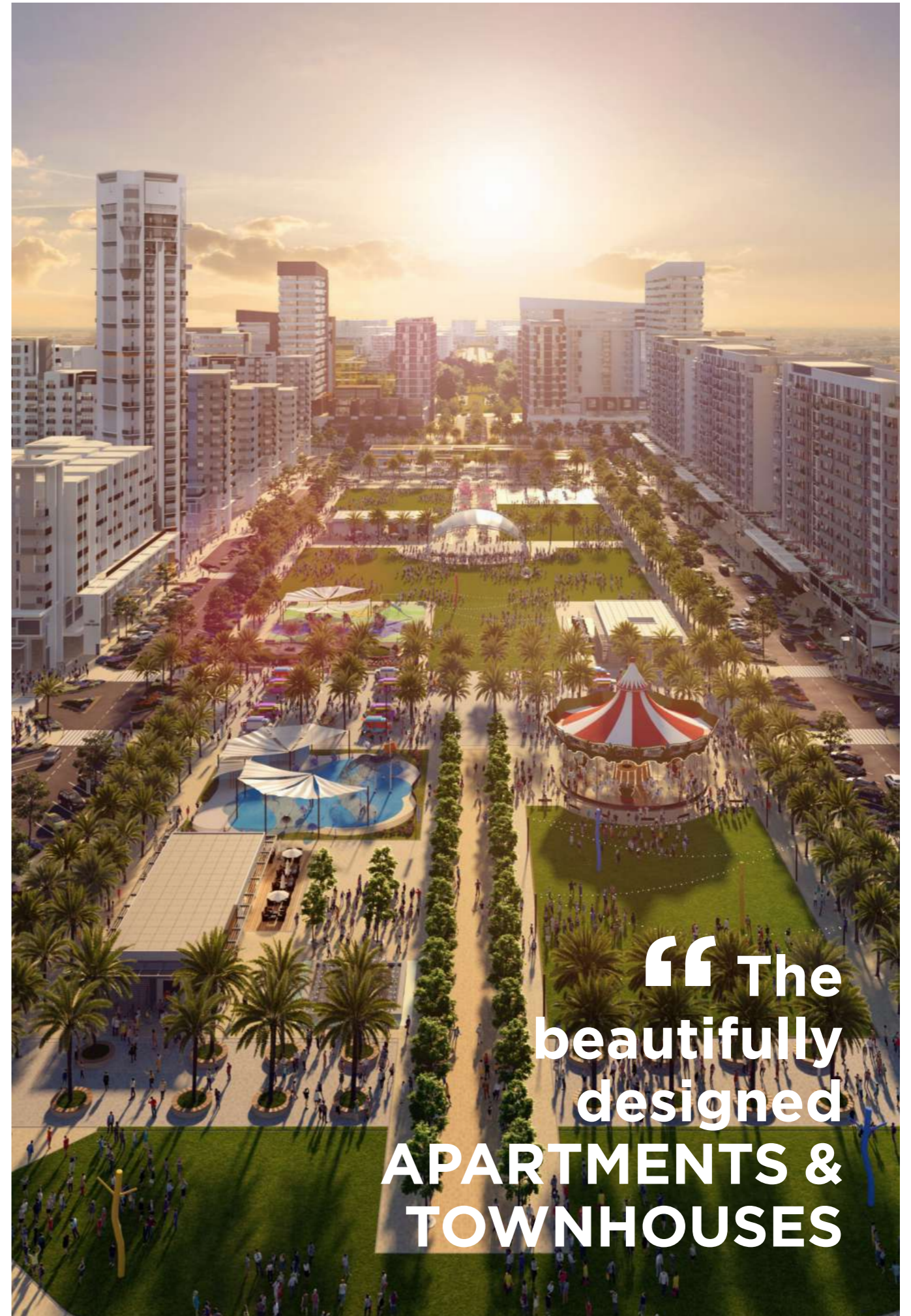


Outdoor Cinema

TOWN SQUARE DUBAI

Offers you a rare opportunity to live in one of the finest and most exclusive new developments in Dubai. Surrounded by areas of secluded private parkland, all apartments and townhouses are designed to offer a peerless level of specification and spacious accommodation.

The beautifully designed apartments and townhouses range in size, style and elegance and are accessed via private gated driveways.



“ The
beautifully
designed
**APARTMENTS &
TOWNHOUSES**



A FIRST
CLASS
RESIDENCE

ABOUT ASCOT Residences

Your home is like life itself, alive and vital. Every square inch of it reflects your personality. And your apartment at ASCOT Residences fits neatly into what you have in mind.

Aesthetic and functional, every detail has found its way into the interiors. You have a choice of intuitive floor plans that let you accent and define your home the way you want it.

Every studio, 1, 2 and 3 bedroom apartments offers you the versatility to create a home you can truly call your own.



ASCOT
RESIDENCES

STUNNING INSIDE

Living and dining areas offer abundant natural light. Bedrooms are furnished with glazed porcelain floors with in-built wardrobes whereas master bedrooms have an en-suite bathroom.

The modern day kitchen layouts entail scratch and stain proof prep counters, overhead cabinets and glazed porcelain tile flooring.



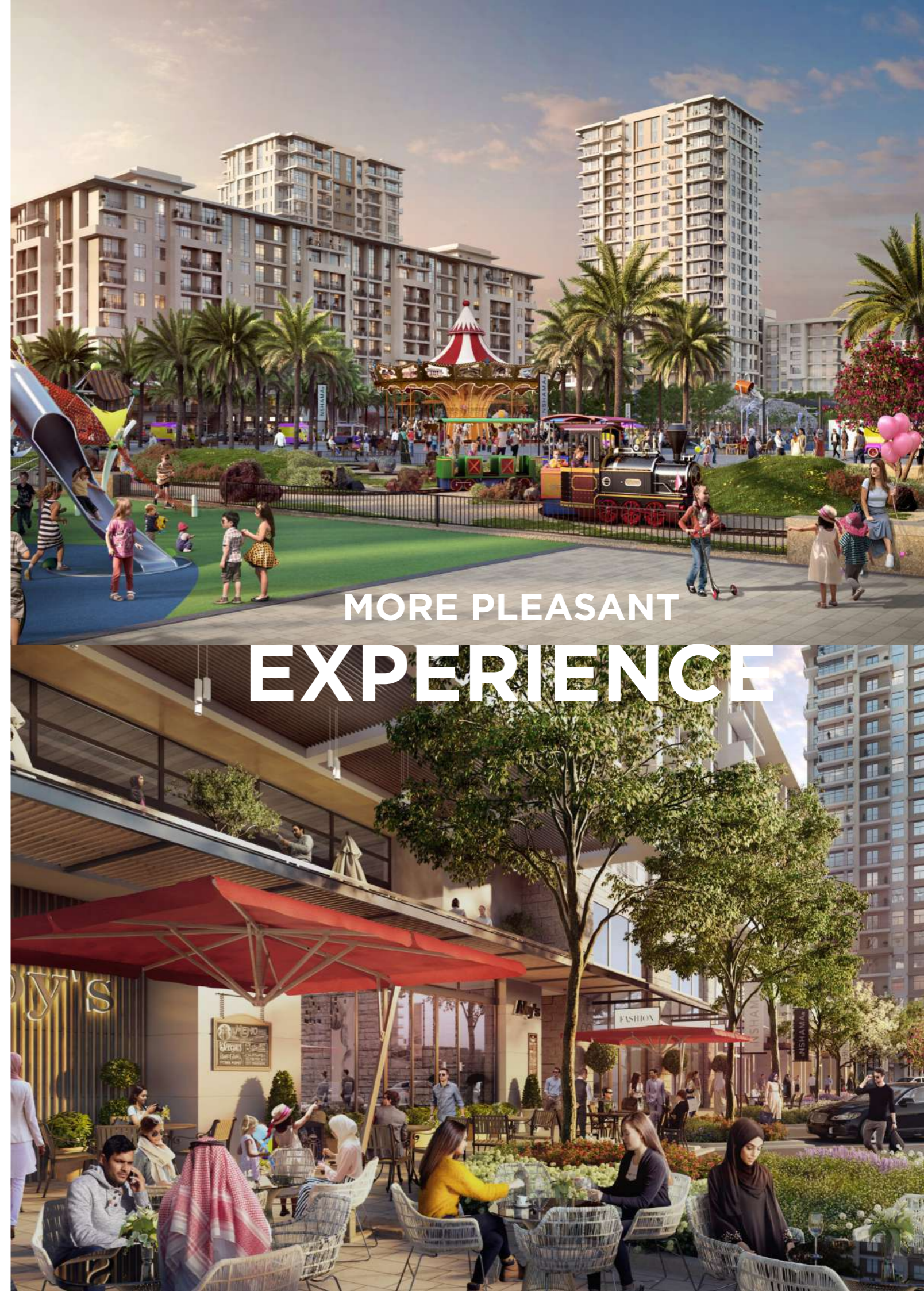
BEAUTIFUL OUTSIDE

Every design has been planned to perfection.

From individual units to the complex as a whole, is crafted for the modern homebuyer.

OUR LIFESTYLE

With hundreds of retail stores, as well as numerous coffee shops, restaurants, nature trails, cycling and jogging paths, a 37,000 square meter park and so much more that the new generation of homebuyers find so appealing.



STUDIO

Unit Type A

| AREA | MIN | MAX |
|---------------------|---------------------------|---------------------------|
| SUITE | 29.53 Sq.m / 317.86 Sq.ft | 29.53 Sq.m / 317.86 Sq.ft |
| TOTAL BUILT-UP AREA | 29.53 Sq.m / 317.86 Sq.ft | 29.53 Sq.m / 317.86 Sq.ft |



1 BEDROOM

Unit Type A

| AREA | MIN | MAX |
|---------------------|---------------------------|---------------------------|
| SUITE | 52.70 Sq.m / 567.26 Sq.ft | 52.70 Sq.m / 567.26 Sq.ft |
| BALCONY | 5.24 Sq.m / 56.40 Sq.ft | 5.24 Sq.m / 56.40 Sq.ft |
| TOTAL BUILT-UP AREA | 57.94 Sq.m / 623.66 Sq.ft | 57.94 Sq.m / 623.66 Sq.ft |



*Balcony sizes vary

Disclaimer

1. All room dimensions are in metric and measured to structural elements and exclude wall finishes and construction tolerances. 2. All dimensions have been provided by our consultant architects. 3. All materials, dimensions, drawings features and amenities are approximate at the time of printing. 4. Actual area may vary from stated area. Drawings not to scale E&EO. The developer reserves the right to make revisions to the floor plans and any features, materials, dimensions, drawings and amenities mentioned in this brochure without notice.

Disclaimer

1. All room dimensions are in metric and measured to structural elements and exclude wall finishes and construction tolerances. 2. All dimensions have been provided by our consultant architects. 3. All materials, dimensions, drawings features and amenities are approximate at the time of printing. 4. Actual area may vary from stated area. Drawings not to scale E&EO. The developer reserves the right to make revisions to the floor plans and any features, materials, dimensions, drawings and amenities mentioned in this brochure without notice.

1 BEDROOM

Unit Type B

| AREA | MIN | MAX |
|---------------------|---------------------------|---------------------------|
| SUITE | 51.65 Sq.m / 555.96 Sq.ft | 51.65 Sq.m / 555.96 Sq.ft |
| BALCONY | 8.66 Sq.m / 93.22 Sq.ft | 8.66 Sq.m / 93.22 Sq.ft |
| TOTAL BUILT-UP AREA | 60.31 Sq.m / 649.17 Sq.ft | 60.31 Sq.m / 649.17 Sq.ft |



*Balcony sizes vary

Disclaimer

1. All room dimensions are in metric and measured to structural elements and exclude wall finishes and construction tolerances. 2. All dimensions have been provided by our consultant architects. 3. All materials, dimensions, drawings features and amenities are approximate at the time of printing. 4. Actual area may vary from stated area. Drawings not to scale E&EO. The developer reserves the right to make revisions to the floor plans and any features, materials, dimensions, drawings and amenities mentioned in this brochure without notice.

2 BEDROOM

Unit Type A

| AREA | MIN | MAX |
|---------------------|---------------------------|---------------------------|
| SUITE | 78.77 Sq.m / 847.87 Sq.ft | 79.55 Sq.m / 856.27 Sq.ft |
| BALCONY | 4.90 Sq.m / 52.74 Sq.ft | 5.46 Sq.m / 58.77 Sq.ft |
| TOTAL BUILT-UP AREA | 84.23 Sq.m / 906.64 Sq.ft | 84.45 Sq.m / 909.01 Sq.ft |



*Balcony sizes vary

Disclaimer

1. All room dimensions are in metric and measured to structural elements and exclude wall finishes and construction tolerances. 2. All dimensions have been provided by our consultant architects. 3. All materials, dimensions, drawings features and amenities are approximate at the time of printing. 4. Actual area may vary from stated area. Drawings not to scale E&EO. The developer reserves the right to make revisions to the floor plans and any features, materials, dimensions, drawings and amenities mentioned in this brochure without notice.

2 BEDROOM Unit Type B

| AREA | MIN | MAX |
|---------------------|---------------------------|---------------------------|
| SUITE | 77.03 Sq.m / 829.14 Sq.ft | 79.80 Sq.m / 858.96 Sq.ft |
| BALCONY | 8.71 Sq.m / 93.75 Sq.ft | 8.72 Sq.m / 93.86 Sq.ft |
| TOTAL BUILT-UP AREA | 85.74 Sq.m / 922.90 Sq.ft | 88.52 Sq.m / 952.82 Sq.ft |



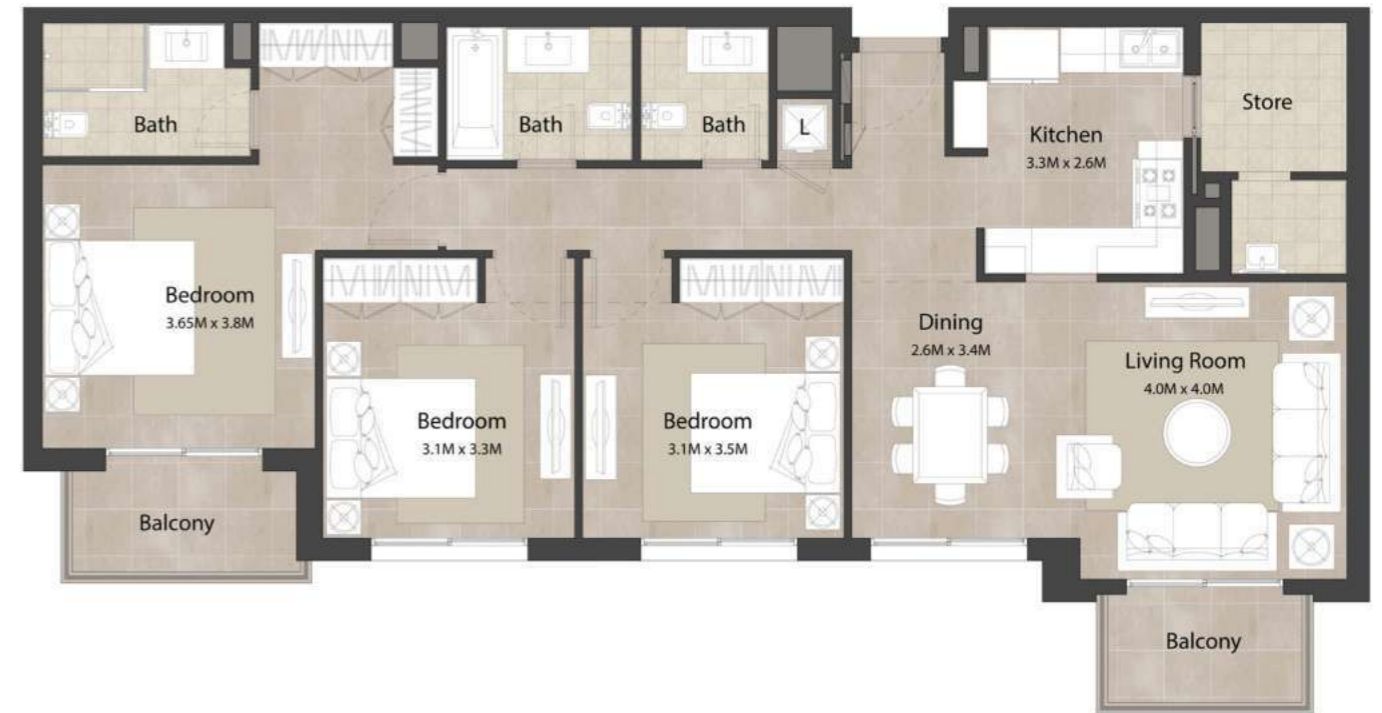
*Balcony sizes vary

Disclaimer

1. All room dimensions are in metric and measured to structural elements and exclude wall finishes and construction tolerances. 2. All dimensions have been provided by our consultant architects. 3. All materials, dimensions, drawings features and amenities are approximate at the time of printing. 4. Actual area may vary from stated area. Drawings not to scale E&EO. The developer reserves the right to make revisions to the floor plans and any features, materials, dimensions, drawings and amenities mentioned in this brochure without notice.

3 BEDROOM Unit Type A

| AREA | MIN | MAX |
|---------------------|-----------------------------|-----------------------------|
| SUITE | 120.10 Sq.m / 1292.74 Sq.ft | 120.10 Sq.m / 1292.74 Sq.ft |
| BALCONY | 10.13 Sq.m / 109.04 Sq.ft | 10.13 Sq.m / 109.04 Sq.ft |
| TOTAL BUILT-UP AREA | 130.23 Sq.m / 1401.78 Sq.ft | 130.23 Sq.m / 1401.78 Sq.ft |




*Balcony sizes vary

Disclaimer

1. All room dimensions are in metric and measured to structural elements and exclude wall finishes and construction tolerances. 2. All dimensions have been provided by our consultant architects. 3. All materials, dimensions, drawings features and amenities are approximate at the time of printing. 4. Actual area may vary from stated area. Drawings not to scale E&EO. The developer reserves the right to make revisions to the floor plans and any features, materials, dimensions, drawings and amenities mentioned in this brochure without notice.

Riseonic Realty

 (+971) 56 536 1662

 Contact@riseonic.ae

 www.riseonic.ae



For more information please visit:

1603 Lake Central Tower, Marasi Drive, Business Bay, Dubai, UAE