

ALANDALUS

AT JUMEIRAH GOLF ESTATES

PAY ONLY 20% AND MOVE IN



JUMEIRAH
GOLF ESTATES



BEDROOMS	SIZE FROM	MINIMUM STARTING PRICE
1 bedroom apartment	781 sqft	AED 875,000
2 bedroom apartment	1366 sqft	AED 1,525,000
3 bedroom apartment	1798 sqft	AED 2,050,000
4 bedroom apartment	2339 sqft	AED 2,800,000

20%

PAY 20% AND MOVE IN

80%

3 YEARS POST HANDOVER

MODERN APARTMENTS



HIGH QUALITY APARTMENT FINISHES



WELL-APPOINTED BATHROOMS



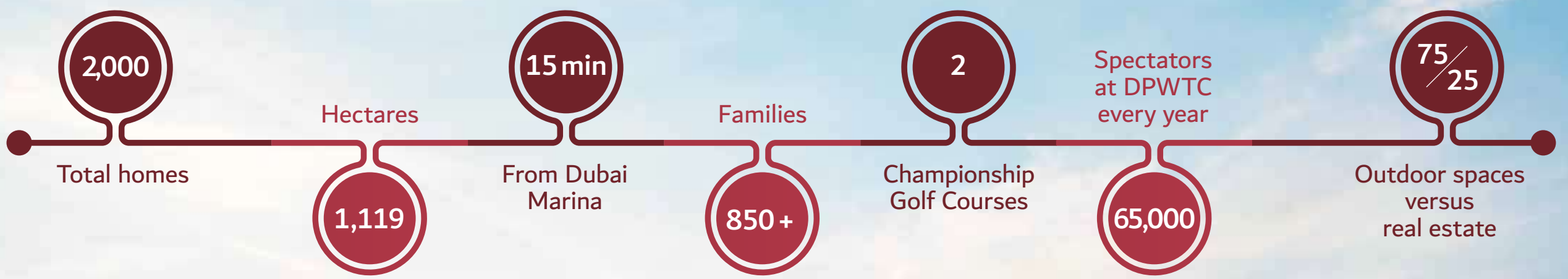
@jumeirahgolfest

jumeirahgolfestates.com

ALANDALUS
AT JUMEIRAH GOLF ESTATES

 **JUMEIRAH**
GOLF ESTATES

LIFE AT JUMEIRAH GOLF ESTATES



 4 F&B outlets

 1 Clubhouse and Country Club

 342 Species

 Over 4,000 trees

 16 km Jogging and cycling paths

 15 Lakes

COMMUNITY LIVING



WELL CONNECTED WITH THE CITY



15 MINS
FROM PALM
JUMEIRAH



15 MINS
FROM
DUBAI MARINA



15 MINS
FROM
EXPO 2020 SITE

FLOORPLANS



@jumeirahgolfest

jumeirahgolfestates.com

ALANDALUS
AT JUMEIRAH GOLF ESTATES

 **JUMEIRAH**
GOLF ESTATES

TOWER E - 2 BEDROOM TYPE A



	Sq.ft	Sq.M
Average of Total Area	130	1,396
Minimum of Total Area	127	1,366
Maximum of Total Area	159	1,712

TOWER E - 3 BEDROOM TYPE B



	Sq.ft	Sq.M
Average of Total Area	168	1,807
Minimum of Total Area	177	1,901
Maximum of Total Area	179	1,926

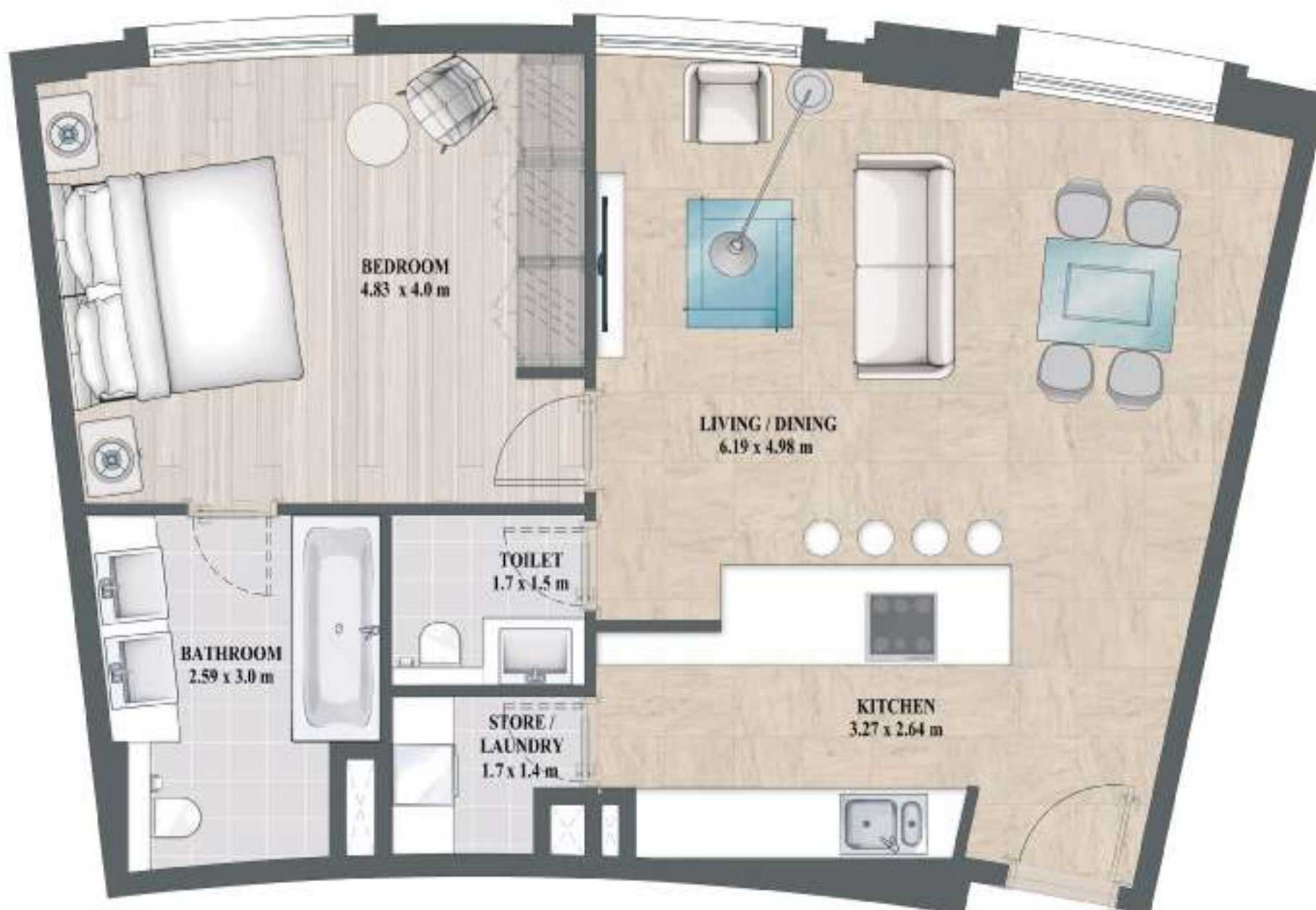


TOWER E - 4 BEDROOM TYPE A



	Sq.ft	Sq.M
Average of Total Area	307	3,303
Minimum of Total Area	217	2,337
Maximum of Total Area	307	3,305

TOWER E - 1 BEDROOM TYPE B




	Sq.ft	Sq.M
Average of Total Area	72	777
Minimum of Total Area	72	777
Maximum of Total Area	72	778





Riseonic Realty

 (+971) 56 536 1662

 Contact@riseonic.ae

 www.riseonic.ae

For more information please visit:

1603 Lake Central Tower, Marasi Drive, Business Bay, Dubai, UAE

